



Aboriginal Lands Trust **09/10** **ANNUAL REPORT**



Contents

Chairman's Review	2
Functions of the Aboriginal Lands Trust	3
Aboriginal Lands Trust Directions	4
Review of the Aboriginal Lands Trust Act 1966	5
Executive Summary	6
Board of Management	9
Staff	12
Land Vested in the Aboriginal Lands Trust	14
Aboriginal Lands Trust Community Business	16
Aboriginal Lands Natural Resource Management Projects	27
Financial Statement 2009 - 2010	37

Chairman's Review

I am pleased to present my tenth Annual Report of the Aboriginal Lands Trust for the period 2009 / 2010. I wish to thank the Board for their assistance throughout the year and in particular that given by the Deputy Chairperson, Mr. Haydn Davey.

As for much of its long and proud history the Trust has continued to struggle to deliver the level of services reasonably expected by its Communities; with effective responses being defined by a restrictive budget and the inability to respond to the often long outstanding leasing requirements for much of the year.

The Board following the State Elections in March and with the appointment of the new Minister for Aboriginal Affairs and Reconciliation were pleased to be permitted to reactivate the property leasing and licensing process with extended family and home land groups, with many outstanding leases being renegotiated and renewed.

The Board being represented by myself as Chairperson, Haydn Davey as Deputy Chairperson and John Chester as General Manager participated on the State Government Aboriginal Lands Trust Act 1966 Reference Group and maintained an active interest in the development and upgrading required of a new Act. This included attending many meetings and consultations and representing Trust Community views, ever keen to see the new legislation under pinned by a philosophy of self management and self determination for Aboriginal people.

The Board again appreciated the opportunity to meet with the Aboriginal Lands Parliamentary Standing Committee in September 2009 and the Honourable Grace Portolesi the Minister for Aboriginal Affairs and Reconciliation in May 2010. The Board also met and held discussions with the Board and Chief Executive Officer of the Aboriginal Foundation, a body newly established to provide economic development opportunities for Aboriginal People in South Australia, in April 2010. The Board remains ever vigilant to taking up the opportunities available at the strategic level to develop Trust land and facilities.



George Tongerie A.M., J.P. 16612.

George Tongerie A.M., J.P.
Chairperson Aboriginal Lands Trust

Functions of the Aboriginal Lands Trust

The Aboriginal Lands Trust is established pursuant to the Aboriginal Lands Trust Act 1966.

The Aboriginal Lands Trust Act 1966 was the first in Australia to ensure that titles to existing Aboriginal Reserves were held in trust on behalf of all Aboriginal people in South Australia.

The Aboriginal Lands Trust holds free hold title to 63 properties comprising approximately 990,000 hectares of land for economic and cultural benefit, other former Crown Lands transferred to it and properties that have been donated purchased or otherwise acquired.

The core functions of the Trust are to hold, manage and administer land. The Trust has met these responsibilities by organising the leasing of land to Communities and managing natural resource management programs to improve conditions on the land.

For the past 15 years, the Aboriginal Lands Trust has sought and been granted funds from the Australian Government's Natural Heritage Trust, Natural Resource Management, and State Community Grant programs to undertake Landcare projects in conjunction with Aboriginal Communities and other landholders.

Such projects have not only benefited landholders, but have enabled the Trust to take a more direct and proactive role on working directly with local and remote Aboriginal Communities, individuals and government agencies both State and Federal on land management issues with a goal of working towards sustainable economic development .





Aboriginal Lands Trust Directions

While progress was made with the Review of the Aboriginal Lands Trust Act 1966, the continuing uncertainty created by this process and the non renewal of Community leases after five years, maintained until March 2010 when Ministerial approval was given to proceed with leasing and licensing arrangements for family groups and homeland groups.

Licensing and Leasing arrangements were progressed in most regions across South Australia as a consequence; **Adelaide** (2), **Coorong** (11), **Murray Lands** (4), **Riverland** (3), **Yorke Peninsula** (2), **Far North** (2), **Mid North** (3), **Flinders** (1), **Lower Eyre Peninsula** (2), **Far West** (19). Additional staff resources are needed to fulfil this statutory area of Trust work.

Funded by the Commonwealth Department of Employment and Work Place Relations the Trust began a major project to review the potential of its wide ranging assets for commercial development. Following a careful selection process by separate panel, Armstrong Muller Consulting were selected to undertake the project.

The Trust Board met with the new government assisted Aboriginal Foundation Board and CEO in April 2010. The Foundation is established to assist Aboriginal Groups to develop assets for commercial outcomes. Discussion focussed on Trust assets with potential for immediate development.

The Trust continues to undertake a wide range of land care and land management projects and activities across the State on Aboriginal Lands. The Trust presently deploys three full time staff to facilitate this work.

Review of the Aboriginal Lands Trust Act 1966

The Aboriginal Lands Trust Act 1966 was proclaimed on the 5th of December 1966 becoming the first Aboriginal Land Holding Authority in Australia.

Over this 44 year period, the Trust has become the owners of 63 Certificates of Title held in trust on behalf of the Aboriginal people of South Australia, including many of the States large rural and remote Aboriginal Communities (Yalata, Koonibba, Davenport, Umoona, Nipapanha, Gerard, Point Pearce and Raukkan).

The Government began a discourse in 2004 regarding the future role and responsibilities of the Aboriginal Lands Trust. The then Minister Hon. Terry Roberts formally sought support from the Trust Board for one of the major planks in its Aboriginal program – a Review of the Aboriginal Lands Trust Act 1966.

There have been reviews in the past but they have had little or no impact on the legislation. The Board for itself, agreeable to the Minister's direction, has long held the view that a new dynamic statement which strengthens self determination, self regulation and self management and entrenches it in legislation to the long term benefit of the Aboriginal people of South Australia is warranted.

The Aboriginal Lands Trust Board believes strongly that the process of legislative renewal must provide all the settings for improving the health and well being of the thousands of Aboriginal people living on Trust Lands.

A preliminary review of the Act was undertaken by the Board of the Aboriginal Lands Trust during a workshop in May 2007. Recommendations and outcomes arising from the workshop were directed to the Minister for Aboriginal Affairs and Reconciliation for consideration.

The Hon. J Weatherill, the then Minister for Aboriginal Affairs and Reconciliation established a Reference Group on which the Aboriginal Lands Trust Board is represented by its Chairperson and Deputy Chairperson. An important commitment was made to an extensive consultation program to be held on Trust Communities. Ministerial advice to the Board was that three directions would guide the review process.

- *The ongoing principle of Aboriginal freehold land*
- *The maintaining of a statutory land holding authority*
- *The objective of efficient and effective operations*

The Review of the Aboriginal Lands Trust Act 1966 Discussion Paper was circulated by the Minister in November 2008 as the basis for discussion and wide consultation. Mr Haydn Davey Deputy Chairperson and Mr John Chester General Manager representing the Chairperson attended Aboriginal Community consultation meetings as part of the Ministerial Reference Group.

Executive Summary

The review of the Aboriginal Lands Trust Act 1966 progressed with the collation and analysis of submissions following the 1st stage consultations. Earnest work took place on the Consultation Paper which brought together the initial round of public consultation and set out the vision for a modern and reinvigorated Aboriginal Lands Trust. The ALT Reference Group held a series of meetings during this time to discuss the direction of the Consultation Paper and address key issues.



(L-R) Derek Walker, Klynton Wanganeen, Harry Miller, Haydn Davey & John Chester
Chairman Uncle George Absent for this meeting

Address to the Minister

Minister Weatherill, on behalf of the South Australian Government, you have initiated a Review of the Aboriginal Lands Trust Act 1966 and provided for public consultation and discourse a discussion paper "Review of the Aboriginal Lands Trust Act 1966" November 2008. The Board members of the Aboriginal Lands Trust have repeatedly called for such a review since 1995, and we thank you for your willingness to take on this important task. We provide this document to you as our collective and considered response. We hope to find it useful in your deliberations, and we trust that in your final judgment, you will hold the well-being of all Aboriginal people as the most important outcome to be achieved by any revision to the Act.

Response

This paper was formulated from the collective and individual responses of members of the Aboriginal Lands Trust Board at two separate workshops and based on discussions with and research by staff at the Board, in particular John Chester, General Manager and Robert Jackson, Project Officer.

This document was presented to the Minister of Aboriginal Affairs in South Australia, in response to his Review of the Aboriginal Lands Trust Act 1966. In this document, the Board of the Trust respond to the Review, based on what they believe would improve the well-being of Aboriginal people who live on the lands held in trust by the Aboriginal Lands Trust.

Executive Summary

The following members of the Board were present at the workshops:

Haydn Davey, Deputy Chair, Elaine Newchurch, Kingsley Abdullah, Bernard Porta, Irene McKenzie, Christine Lennon, Reg Dodd, Ian Johnson, Mable Lochoviak, Peter Rigney, David Rathman AM PSM (The Chair George Tongerie AM JP Absent through Illness)

The Board identifies the following important matters for “the Objects” of the Act to cover:

1. *Giving Community members self determination powers;*
2. *Recognising certain groups as important:*
 - *Those who live on the Communities;*
 - *Those who live near the Communities and maintain connections and responsibilities;*
 - *Those who have native title rights;*
 - *Those who do not have native title rights, but have historical connection to the land;*
3. *Maintaining the land for future generations avoiding transfer of land away from the secure tenure role of the Trust.*

The Board also seeks at the more philosophical level to have the Objects reflect the Aboriginal aspiration that arises from ownership of its traditional lands:

- *A sense of belonging;*
- *A contentment arising from the prospect of perpetual connection;*
- *Freedom of access;*
- *Benefits arising from well managed and maintained land and infrastructure;*
- *Opportunities for skills development, traditional knowledge, economic activity.*

The Board remains committed to Community management and control of their own affairs on Trust land.

The Trust Board strongly supports the Community representation not the Board, for which the present Act provides. The Trust Board supports Ministerial appointments to the Board including the Chairperson. The proviso here is that the Community membership should remain in the majority.

The Trust, whilst remaining sensitive to direct intervention in the affairs of its Communities, is agreeable to having effective guidance in the Act in relation to client constitutions, particular in relation to client Communities, which minimise the risk of an overwhelming influence of a single family in its Council and Committees, eliminates potential conflict of interest problems, protects against dysfunctional management and ensures capacity building (training) for Community leaders.

The Trust Board seeks to continue to support the incorporation of its clients and to directly assist them, as in the past, with the process. However, it is clear that there are limitations in the current model for the Board to achieve this aim. We propose that the Act be altered to reflect a modified role for the Aboriginal Lands Trust, that is more similar in nature to local government than it is to a simple asset holding trust. Under this arrangement, the Trust would have powers to raise levies and fees from the local community and businesses that reside on the Lands and would be able to compete for funding under a broader range of State and Commonwealth government funding programs, increasing the resources available for communities on the Lands (Fig. 1 - Page 10).



Executive Summary

Such a model would require a modest increase in base funding from the State Government to support an increased capacity of the Trust. In return, the Act would require the Trust to work with the local Communities to undertake a broader range of responsibilities, as well as retaining its existing responsibilities.

Of all of the service delivery models proposed by individuals who have participated in this Review, the Board is strongly of the opinion that the model described in this document:

- *Makes the most efficient use of resources: the Trust has a long history of doing much with little. It has had some world class success (eg. Nipapanha), despite limited resources to work with. A more regionally devolved model would require more resources for little gain in terms of delivery output in the view of the Board.*
- *Is the most inclusive of the broader Aboriginal Community. Aboriginal Communities on the lands held by the Trust are diverse. They include native title claimants, non-native title claimants with historic links to the lands, and broader family groups who feel a connection to these lands. The Aboriginal Lands Trust represents the interests of all of these individuals. It is an organisation “of the people, by the people, for the people”, a grass-roots community organisation that represents the best aspects of democratic governance.*
- *Gives individual community members the greatest certainty over land tenure. Free-hold title gives Aboriginal People the greatest protection under the law.*
- *Gives Aboriginal People the greatest flexibility for using the land resources for cultural and economic development. Free-hold title requires no permission from other landholders to be sought. It gives greater entitlement and rights than native title rights or access to Crown Land.*
- *Provides on the model that allows for “taxation with representation” to underpin the delivery of services to Aboriginal People. The Board is of the view that Aboriginal People should not always approach government with their hand out. They wish to walk down a road that ends in self-sufficiency and self-determination. That means, Aboriginal People themselves should also contribute their own funds, and their own capability, to improve their well-being.*

Ensuring the ALT Operates Efficiently

The ALT Board holds the view that once the detailed nature and extent of its role is evident and adequate levels of resources are made available then cost effective delivery of its programs will ensue. The Trust Board remains confident that its long history of sound governance and consequential successful project work with very limited funding provides for an objective assessment of measured achievement.

An unfortunate aspect of the lack of resources has been some lowering of Community expectation over time of the Trust’s ability to respond comprehensively to problems. However, we believe that the revised role for the Board that we put forward, if implemented with increased resources, will reinvigorate Community energy and participation in the management and care of their land and interactions with the Trust.

Executive Summary

Improving Aboriginal Prosperity

The ALT Board expects that in addition to maintenance of Aboriginal culture that the new Act will set out requirements for suitable mainstream economic development and include this in the Objects. Again, we propose a model whereby the Trust can raise the resources required to achieve this goal, as it is clear that the current role and resources of the Trust are insufficient.

Economic Development

The ALT Board reviewed the essential requirements for economic development on its Communities from a number of perspectives including:

- *The Minister's requirement in the Discussion Paper for improved prosperity for Aboriginal People.*
- *The Aboriginal Lands Trust having operated without assistance or advice from a Business Advisory Panel for 10 years.*
- *The Aboriginal Lands Trust recent, comprehensive yet unsuccessful submission to government for funds to establish an Economic Development Unit within the Trust to respond to Community based commercial planning and activity.*
- *The recent, greatly increased difficulty of accessing grants for Natural Resource Management activities on Trust properties, notwithstanding twelve years of successful projects.*
- *The lack of suitable, well understood mechanisms and protocols to provide the Trust with joint venture prospects with the Indigenous Land Corporation, Indigenous Business Australia and State Regional Economic Development Boards.*

The Trust strongly favours the establishment and resourcing of formal processes that can provide guarantees to Trust Communities when suitably prepared, for access to a range of resources for economic development.

Under the new model of operating of the Trust proposed, the Trust would develop strategic plans for economic development, link Community members with appropriate training and mentoring support, seek funds from competitive funding pools for economic development, and form relationships with external service providers and organisations of relevance.

The Trust would, where possible, aim to maintain a small and efficient service delivery team within the Trust itself, and build capacity to deliver services in the Communities who live on the lands, including with native title holders. There are significant issues of management and accountability that will need to be worked through, and appropriate protocols and management systems put in place to ensure success under this model. But the Board strongly believe that it is the only mechanism that will result in long term Community development and self-sufficiency.

Executive Summary

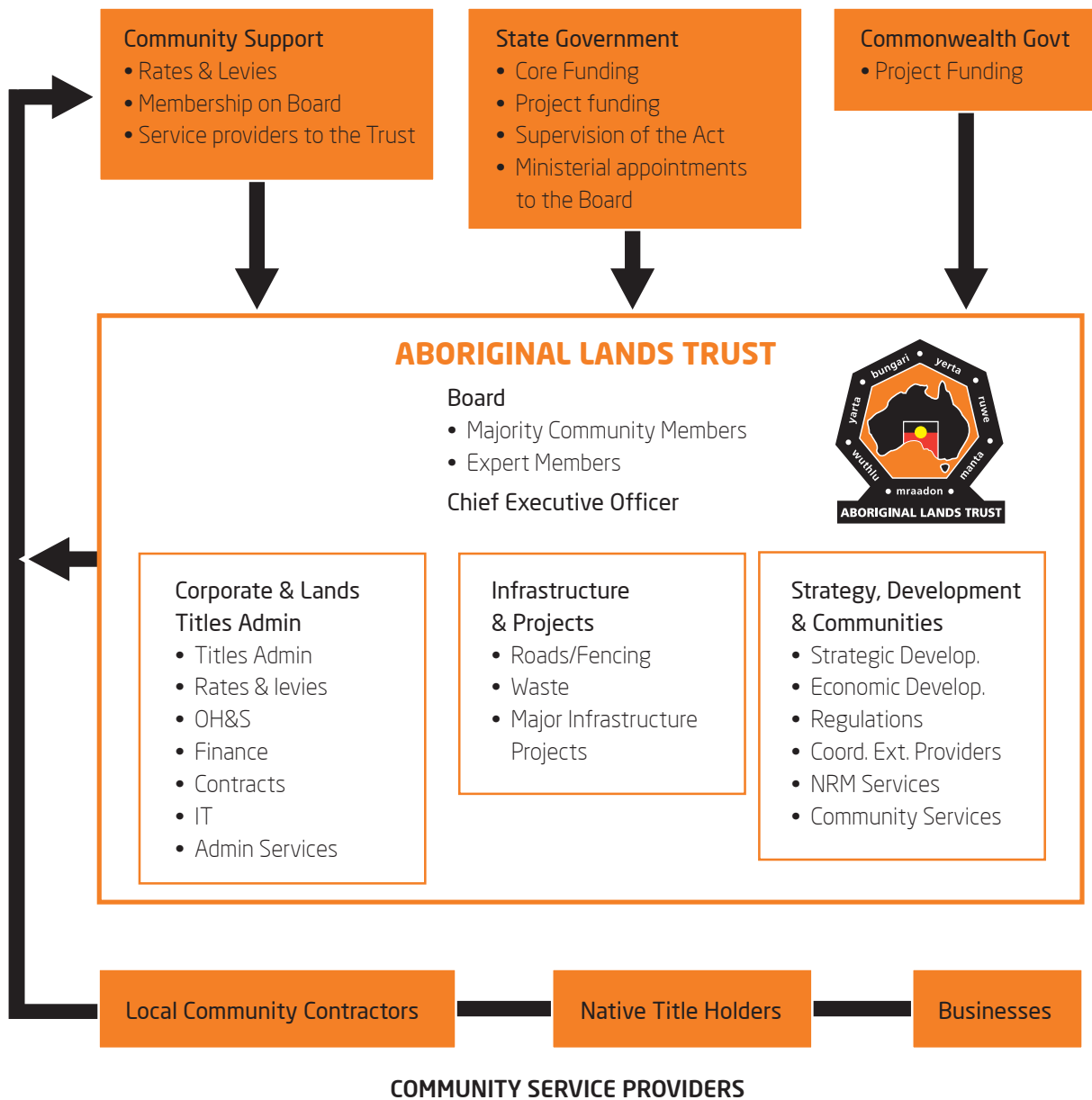


Fig. 1 Proposed Management Model for the Aboriginal Lands Trust

Board of Management

The Governor in Executive Council appoints members of the Aboriginal Lands Trust Board. These members are nominated by Community Councils of local Aboriginal Communities recognised by the Minister for Aboriginal Affairs and Reconciliation. These members normally reside on Trust land. The Minister for Aboriginal Affairs and Reconciliation directly appoints the Chairperson and Ministerial Representative(s).

Presently every member of the Aboriginal Lands Trust Board is an Aboriginal Person. Membership on the Aboriginal Lands Trust Board of Management is for a term of three years. The members appointed for 2006-2009 have been retained until a new Board is established under a revised Aboriginal Lands Trust Act.

The Board meets four times a year and its Executive at other times to deal with urgent business. Members are remunerated by an annual membership fee. The Aboriginal Lands Trust meets the travel and accommodation expenses of members to attend to Trust business. The Board is approved to provide sitting fees for its members attending Executive and Economic Development meetings with allowance for travel time.

For 2009 / 2010, the Board of Management met on the following occasions:

- 30th September & 1st October 2009 – ALT Office, Walkley Heights
- 9th & 10th December 2009 – Sunnybrae Function Centre, Regency Park
- 7th & 8th April 2010 – ALT Office, Walkley Heights
- 14th & 15th July 2010 – ALT Office, Walkley Heights

The Executive of the Board also met on several occasions to deal with urgent business:

- 21st October 2009
- 6th & 13th November 2009
- 11th January 2010
- 4th February 2010
- 28th April 2010
- 21st May 2010
- 4th June 2010

The Ministerially funded Economic Development Committee met on Commercial matters mainly dealing with Point Pearce and Gerard during the year:

- 4th December 2009
- 11th January 2010
- 4th February 2010
- 15th February 2010
- 11th March 2010
- 19th March 2010
- 31st March 2010



Board of Management

Those who served on the Board during 2009-2010 were:

George Tongerie AM, JP	Chairman
Haydn Davey	Port Lincoln Aboriginal Community Council Deputy Chairperson
Kingsley Abdulla	Gerard Community Aboriginal Corporation
Mabel Lochowiak	Umoona Community Council Inc
Reg Dodd	Marree Arabunna Peoples Committee Inc
Keith Peters	Yalata Community Council Inc
Ian Johnson	Nipapanha Community Council Inc
Christine Lennon	Dunjiba Community Council Inc
Irene McKenzie	Davenport Community Council Inc
Bernard Porta	Koonibba Aboriginal Community Council Inc
Elaine Newchurch	Point Pearce Aboriginal Corporation
Peter Rigney	Raukkan Community Council Inc
Brett Miller	Ceduna Homelands Communities

With the approval of the Minister for Aboriginal Affairs and Reconciliation the previously appointed Board have continued to serve. It is anticipated that their services will continue until a new Board is appointed under a revised Aboriginal Lands Trust Act anticipated to be put before the Parliament in 2011.

Board of Management



(First Row) George Tongerie *Chairman*, Haydn Davey *Deputy Chairman* & John Chester *General Manager*
 (Second Row) Irene McKenzie, Brett Miller, Elaine Newchurch & Mabel Lochowiak
 (Third Row) Reg Dodd, Kingsley Abdulla, Ian Johnson & Bernard Porta
 (Forth Row) Keith Peters, Christine Lennon & Peter Rigney



Staff

The Chief Executive of the Department of the Premier and Cabinet is the designated person to employ staff to perform functions in connection with the operations or activities of the Aboriginal Lands Trust.

A proclamation under Section 3 of the Aboriginal Lands Trust Act 1966 was made by the Governor on 29th March 2007 for the purpose of designation of employing authority.

Staff that administer the statutory functions of the Trust are taken to be employed by or on behalf of the Crown, but will not be employed in the Public Service of the State unless brought into an administrative unit under the Public Sector Management Act 1995.

In relation to the position of General Manager, the CEO of DPC has delegated authority to the Trust Board to appoint. While staff appointment responsibilities are presently delegated to the Executive Director of the Division of Aboriginal Affairs in the Department of Premier and Cabinet the Trust has formally requested this delegation be transferred to the General Manager.

Salaries of staff that administer the statutory functions of the Trust are covered by an annual grant from the State Government, through the Aboriginal Affairs and Reconciliation Division of the Department of Premier and Cabinet. The salaries of staff employed to manage Landcare projects are met from the combination of Australian Government Program Community grants and the State Natural Resource Management Boards (NRM) Community grants on a project-by-project basis, being negotiated annually.

The Trust anticipates that in the future, maintaining the land management staff will need to be included within the annual State ALT allocation Budget, as part of its Statutory responsibilities, a common request from its Communities for the ALT to be adequately resourced during the many ALT Review Community consultation forums. The support for adequately resourcing the ALT is also being reinforced by other Aboriginal and Non Aboriginal organisations both State and Federal.

Consistent with the new administrative arrangements for staffing a new service level agreement was reached between the Department of Premier and Cabinet and the ALT on Occupational Health, Welfare, Safety and Work Cover.

Staff employed at the Trust during 2009-2010 was:

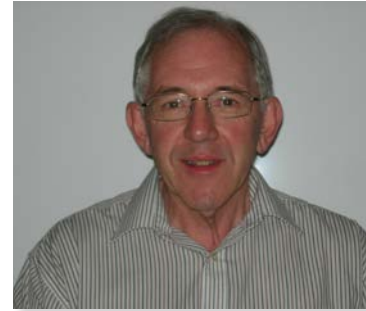
John Chester	General Manager
Wayne Garrett	Finance Officer
Denise Reynolds	Receptionist
Cindy Stoddard	Administration Officer
Bob Jackson	Senior Project Officer (Contract)
Bev Combes	Natural Resource Management Program Coordinator
Roger Rigney	Landcare Coordinator (South East & Yorke Regions)
Chris Rains	Landcare Coordinator (Arid Lands)



George Tongerie A.M., J.P.
Chairman



John Chester
General Manager



Wayne Garrett
Finance Officer



Roger Rigney
Landcare Coordinator



Denise Reynolds
Receptionist



Bob Jackson
Senior Project Officer



Cindy Stoddard
Administration Officer



Bev Combes
NRM Program Coordinator



Chris Rains
Landcare Coordinator

Land Vested in the Aboriginal Lands Trust

WEST COAST

Deed	Land Description
5834 / 851	Yalata Community Lands Colona Station
5834 / 436	Koonibba Community Lands
5517 / 814	House Block – Fowlers Bay
5505 / 405	Betts Corner (via Ceduna)
5580 / 764	Yarilena (Duckponds via Ceduna)
5868 / 908	Sections 189, 190, 211 Warevilla (via Ceduna)
5868 / 908	Section 71 Women's Centre, McKenzie Street, Ceduna
5701 / 728	Aboriginal Arts and Culture Centre, Kuhlman Street, Ceduna
5515 / 917	Cooleyana Well, Streaky Bay
5489 / 225	House Block, Nunjirkompita
5489 / 686	House Block, Nunjirkompita

LOWER EYRE PENINSULA

Deed	Land Description
5965 / 336	House Block, Third Avenue, Port Lincoln
5418 / 949	Mallee Park, Port Lincoln
5418 / 951	Poonindie, Port Lincoln
5423 / 119	Wanilla Forest, Port Lincoln

FLINDERS REGION

Deed	Land Description
5425 / 77	Copley
5508 / 53	Nipapanha Community Lands
5965 / 337	Nantawarrina (Nipapanha)
5496 / 760	Parachilna

FAR NORTH

Deed	Land Description
5424 / 727	House Blocks - 93,97,98 Kutaya Terrace, Oodnadatta
5401 / 840	House Block 11 – Oribee Avenue, Oodnadatta
5834 / 645	Hookeys Water hole and Teamsters Reserve, Oodnadatta
5483 / 463	Anna Creek
5830 / 494	Marree
5581 / 257	Community Land, Coober Pedy
5370 / 179	Community Land, Coober Pedy
CR5747 / 848	Tree Plantation Reserve, Coober Pedy

MID NORTH

Deed	Land Description
5868 / 540	Wamikata / Davenport
5854 / 168	Bungala / Davenport
5580 / 370	Baroota

YORKE PENINSULA

Deed	Land Description
5580 / 368	Moonta
6023 / 159	Point Pearce
5840 / 991	Wardang Island
6023 / 160	House Block, Port Victoria

Land Vested in the Aboriginal Lands Trust

RIVERLAND

Deed	Land Description
5584 / 149	Community Lands, Gerard
5963 / 675	Jerry Mason Senior Memorial Centre Winmante, Glossop
5860 / 142	Lushville Riverfront, Berri
5581 / 283	Land near Swan Reach
5922 / 58	Mission Site near Swan Reach
5472 / 99	Bartsch Farm, Gerard

COORONG

Deed	Land Description
5865 / 985	Community Lands, Raukkan
5566 / 438	Gum Park
5870 / 740	Camp Coorong
5681 / 501	Section 188, Bonney Reserve
5681 / 501	Section 179, 180, 187, Hundred of Bonney
5681 / 501	Section 190, Hundred of Bonney
5515 / 920	Needle Island
5515 / 920	Goat Island
5515 / 920	Snake Island
5834 / 554	Parmbatung and Campbell Point
5580 / 887	Section 575 / 623 Hundred of Baker, Boundary Bluff
5580 / 887	Section 573, Hundred of Baker, Dodds Landing
5612 / 370	Section 5, Hundred of Glyde
5612 / 370	Section 4, Hundred of Glyde
5612 / 370	Rabbit Island

MURRAYLANDS

Deed	Land Description
5515 / 918	Burial Ground, Mannum
5436 / 528	Burial Ground, Swanport, Murray Bridge
5079 / 142	Tumbetin Waal, Monarto
5580 / 888	Farmland, Wellington
5922 / 143	Brinkley Pieces 100, 101, 102, 103 DP 69235
5922 / 143	Section 1079, Brinkley
5721 / 546	House Block, Lot 39, Wanbi

SOUTH EAST

Deed	Land Description
CR 5752 / 182	Burial Ground, Kingston
5508 / 52	Section 32, West, Murrabinna
5508 / 52	Section 32, East, Murrabinna
5508 / 52	Section 33, Murrabinna
5006 / 2833	3 House Blocks, Bordertown
CR 5911 / 537	Section 951, Bordertown

ADELAIDE REGION

Deed	Land Description
5689 / 763	Tandanya, Grenfell Street, Adelaide
5876 / 838	Cyril Lindsay House, South Terrace, Adelaide
5536 / 252	Sussex Street, North Adelaide
5546 / 989	Sussex Street, North Adelaide
5173 / 155	Kali Hostel, Cross Road, Westbourne Park
5517 / 45	Colebrook Land, Eden Hills



Aboriginal Lands Trust Community Business

Community Housing Program

Housing SA in the Department of Families and Communities have been the recipient of significant long term Commonwealth funding for housing on regional and remote Aboriginal Communities. The agency has throughout the year developed a policy framework through which Trust Communities will benefit from a large investment in new housing projects and major upgrades to existing housing.

The Trust as owners of some 424 houses which qualify for the scheme on its Communities, has been deeply involved in the development of the new policy related to the ongoing project and in negotiations between Housing SA and Trust Community Councils to enable suitable leasing arrangements and on ground maintenance projects to be implemented. This has been a challenging and time consuming brief for the Trust and has resulted in a Board approved Memorandum of Understanding between Housing SA and the Trust to facilitate it.

Meantime the Trust has finalised its insurance arrangements over Community Housing with SAICORP including the completion of all outstanding insurance claims. This function is now undertaken by Housing SA.

Community Leasing Program - Adelaide

Olga Fudge Lodge (Kali Hostel)

Negotiations with Aboriginal Family Support Services for right of renewal of lease until 2013 were successfully completed. This included agreement to increasing of \$5,000 per annum of the rent for any future repairs and maintenance to the property if required. This is an example that should be set out in all agreements where maintenance of properties is secured rather than the ALT picking up those costs.

Community Leasing Program - Coorong

Camp Coorong

A Board offer was made to Narrindjeri Land and Progress Association of a new lease (old lease expires 2012) to include adjacent Bonney Reserve.

Millarouan

The Board re affirmed approval of lease of Section 4 and Section 180 (part) Hundred of Glyde to Millarouan Incorporated.

Snake Island

Lease completed and returned to Kurangk Pty Ltd for signature.

Goat Island

Lease completed and returned to lessee N Gollan for signature.

Parmbatung

Lease completed and returned to lessee, Dapung Talkinjeri Incorporated for signature.

Boundary Bluff

Lease completed and returned to lessee, Koolantindjeri Ruwe Incorporated for signature.

Aboriginal Lands Trust Community Business

Community Leasing Program - South East

Blackford and Rosetown

Board renewed an offer of a combined lease over Murrabinna Section 32 West and Rosetown Kingston Burial site to Kungari Incorporated.

Blackford

Board renewed an offer of a lease over Murrabinna Section 33 in favour of the Watson Family.

Bordertown

Board renewed offer to complete negotiation for a lease over Sections 928, 929, 930 and 951 to Tatiara Incorporated.

Community Leasing Program - Murraylands

Wellington / Karpany Road.

Board approved lease in favour of J. Campbell over Sections 1011 and 1012 Karpany Road.

Murrangoon

Lease completed and awaiting signature over Section 1079 Wellington East in favour of E & R Rigney.

Brinkley

The Board approved the transfer of the lease of Allotments 100-103 East Wellington to Karpinyeri Incorporated.

Community Leasing Program - Riverland

Glossop

Lease over Jerry Mason Memorial Centre / Winmante Arts Centre (Section 1039) completed and sent to HEARING Incorporated for signature.

Gerard

Licence over vineyard area completed and sent to Vinexport Pty Ltd for signature.

Community Leasing Program - Yorke Peninsula

Wardang Island, Pt Pearce Farm, Pt Victoria Allotment

The Board formally terminated the unregistered leases previously held by Goreta Aboriginal Corporation (now liquidated).

Community Leasing Program - Far North

Oodnadatta

The Board formally offered Dunjiba Inc lease renewal over four housing allotments in Oodnadatta.



Aboriginal Lands Trust Community Business

Community Leasing Program - Mid North

Davenport

Trust negotiations over lease of Lakeview Transition Centre to Housing SA and Bungala to Bungala CDEP Inc are ongoing. Board approval for the extension of Lakeview was granted.

Community Leasing Program - Flinders Region

Copley

The lease over Section 1278 in favour of Aroona Community Council was completed and is awaiting the signature of the Minister.

Community Leasing Program - Lower Eyre Peninsula

Port Lincoln

Mallee Park and Poonindie

The Board have directed Crown Law to upgrade the Certificates of Title to record the registered vesting of the leases of these titles in favour of Port Lincoln Aboriginal Community Council.

Community Leasing Program - Far West

Ceduna

Womens Centre (McKenzie St) and Arts and Cultural Centre (Kuhlman St)

The Trust have provided Crown Law with the necessary documentation to enable the defunct leases presently on the Certificates of Title to be transferred from the Far West Aboriginal Progress Association (now amalgamated) to Tjutjunaku Worka Tjuta Inc.

Betts Corner

Documentation has been provided for Crown Law to upgrade the Ministerially approved unregistered lease in favour of Betts Corner Incorporated and to remove FWAPA as lessee from the Certificate of Title.

Warevilla

Documentation has been provided for Crown Law to upgrade the Ministerially approved unregistered lease in favour of Warevilla Inc and to remove FWAPA as lessee from the Certificate of Title.

Community Leasing Program - Yalata

Old Yalata Roadhouse, Caravan Park

A Board approved licence in favour of Yalata Community Council Inc has been drafted and AARD review of it requested.

Head of Bight Whale Watch Centre

Board approved agreement with Maralinga Tjarutja Services Pty Ltd to manage the tourist project over the next two years with negotiated extensions offered.

Aboriginal Lands Trust Community Business

TAFE Site

Board and Ministerial approval granted for leasing and development of the site.

Disability Health Unit Site

Board approval given for the site lease for the building of eight units.

New Police Station Site

Board and Ministerial approval granted for a site on the Highway and draft sublease drawn up by SAPOL for consideration.

Community Facilities Upgrades

Remote Airstrips - Yalata

Following the recent major upgrade of the airstrip application was made for a grant from the Commonwealth, Department of Transport and Infrastructure to upgrade the airstrip lighting. Due to the vandalising of airstrip runway lights the Aboriginal Lands Trust was forced to utilise the Iluka ALT Colona Station haul route road allocation to enable repair of the lights while the contractor was on site.

Remote Airstrips - Nipapanha

The Trust reapplied for a major grant to upgrade the airstrip located on Angepena Station.

As the Airstrip is on Angepena Station approval for the upgrade was welcomed by all parties reinforcing the need for acting on Medical Emergencies as their first priorities should they occur.

The Airstrip will only be utilised for emergency situations and maintained by Angepena Station.

Glossop

The Board approved the installation of a transportable building on site to provide a base for the Riverland Aboriginal Men's Group.

Monarto

The Board gave in-principal approval to Lakalingeri Tumbetin Waal to extend the hostel facility on site.

Davenport

The Board approved a major extension of facilities at the Lakeview Transition Camp for Housing SA.

Yalata

The Board approved and progressed the development within the Community of a new TAFE centre, eight units for the disabled and Tullawon Health Service Staff House.

Aboriginal Lands Trust Community Business

Head of Bight

The management of the Head of Bight Whale Watch Tourist facility was transferred to Maralinga Services Pty Ltd, who have made a significant investment in upgrading facilities. Although those changes have improved the facilities the increase of visitors has created an awareness of need to think about future development of the Interpretive Centre. The upgrading included low cost small meals tea and coffee kitchen and eatery area, upgrading Platforms particularly the end of the eastern board walk, upgrading of the carpark area near the existing old interpretive / toilet building with outdoor permanent tables and chairs to allow travellers rest and relaxation before viewing the whales or in the off season enjoying the scenery before continuing on their journey.



1: Upgraded/Repaired Signage

2: Vandalised Signage

3: Broken Tank Stand

4: Repaired Tank Stand

5: White Well Tank Upgrade (before & after)

Aboriginal Lands Trust Community Business

The other important area that needs to be addressed is the immediate upgrading of the Head of Bight access road, the centre of the road crown and shoulders are in much need of repairs and patching.



Yalata Roadhouse canopy dismantled for safety purposes in preparation for the future Opal Fuel Outlet. Due to safety concerns raised by the Yalata Community the ALT was legally obliged to secure to the roadhouse area with fencing and shade cloth.



Secured Roadhouse

Aboriginal Lands Trust Community Business

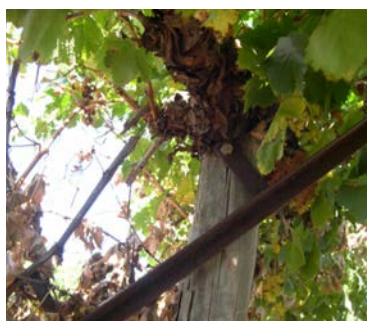
Maralinga Huts / Yalata Caravan Park adjacent to Yalata Roadhouse were upgraded by Yalata Community to allow temporary accommodation for contractors who work within the Community and Yalata Land Management are utilising also the facilities for their Office and Yalata beach management .



Upgraded Huts

Gerard / Lushville

The Trust continued to work with the Gerard Council to establish a plan for the development of a small vineyard for producing premium dried fruit. Discussions with Sunbeam Pty Ltd regarding a long term supplies contract are ongoing. A Community visit to the Mildura Company and dried fruit farm was arranged and facilitated by the Trust to look at the Dried Fruit Industry as a possible future sustainable business opportunity.



The Gerard Council placed the Community on a sound financial footing with the sale of sufficient water from an existing licence. Applications for the sale of water and negotiations for resolution of long outstanding financial responsibilities were subjects of Trust assistance.

Aboriginal Lands Trust Community Business

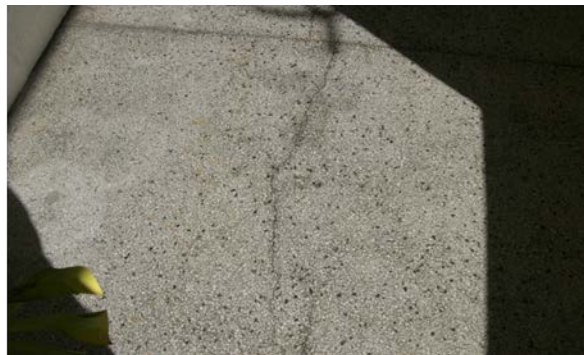
Negotiations are continuing with Gerard Community and Houseboat Adventures for the leasing of riverside houseboat moorings as well as further investigating the possibility of establishing other moorings on the western side of the Berri Bridge. ALT is continuing to assist both parties with this process.



Examples of Vandalism

Olga Fudge Lodge (Kali Hostel)

Due to the dangerous nature of the front severely cracked verandah to residents safety the Trust was able to secure funds to re-concrete the entire area and repair internal flooring.



Aboriginal Lands Trust Community Business

The Trust was approached by the neighbouring property owners regarding the existing trees along the Kali Hostel driveway an onsite meeting and inspection of the trees by all parties was conducted, it was discovered that the offending trees at some stage had been poisoned, and ultimately will die. A focus on removal was now the only option. An amicable three way solution to provide resources to remove the trees was arranged. The neighbouring owners have since sold their property and have moved on subsequently leaving the tree problem to the residents of Kali Hostel and the ALT.

The ALT at this stage is unable to meet the full costs of removal of trees but will continue to monitor the problem. The repairs and maintenance funding will later assist in removal of the trees.

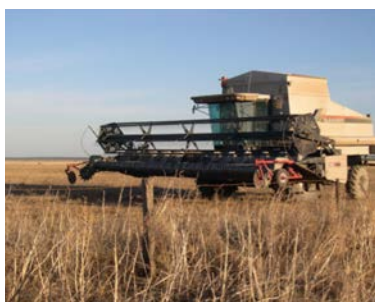


Point Pearce

It was a difficult year For the Trust and Point Pearce Community, regarding the Farming Contractor, the Trust in conjunction with Point Pearce was forced to take on a very active role in management of the Point Pearce Farm which saw the engagement of a local contractor to assist with the harvest to prevent further crop losses and damage occurring due to late harvest practices.

The Trust in conjunction with Point Pearce Council including staff DPC / AARD & Crown Law facilitated a tender and selection process for the replacement of the Farming Contractor. Eventually through the tender process an ALT Board approved Lease for the Point Pearce Farm was awarded in favour of Anna Binna Pty Ltd a local well recognised and well established farming business ending a long period of farm and business management difficulties by the previous lease holder.

Both ALT and Point Pearce Community look forward to prosperous years ahead.



Aboriginal Lands Trust Community Business

Tandanya

The Board approved a modified liquor Licence suitable to art display requirements and special functions at the Centre.

Umoona

The Board approved the release of insurance claim funds for the rebuilding of the Community Kitchen onsite.

Wanilla Forest

The Aboriginal Lands Trust after a request from PLACC for the use of the old 4 wheel drive fire truck has value added to the management of the Forest with the ability to transport equipment and cut timber to the Wanilla compound.

PLACC through their hard work and commitment towards economic development by establishing Wanilla Forest as a sustainable firewood business have been successful in attracting a grant through Indigenous Land Corporation to purchase much needed equipment and materials to value add their business development.

The Trust was asked also to assist with the selection and purchase of a suitable multi functional crew cab tip truck to be used in delivering of cut firewood and contract work with the EP NRM within the region.



Contractors supply iron bark to Western Australia

Aboriginal Lands Trust Community Business

The success of Wanilla Forest demonstrates the need for agencies and organisations to achieve positive outcomes.

Acknowledgements PLACC Community, Aboriginal Lands Trust, Eyre Peninsula Natural Resource Management Board / Group, Eyre Regional Development Board, Allan Mc Dougall, Malim Watts MFS, Lower Eyre Peninsula CFS, Lower Eyre Peninsula District Council, TN&BR Modra Earthmovers.



Pines cleared for safe working area

The Trust is in its 15th year of Landcare advice and support service delivery of mainly Australian Government funding increasing the value of Land assets, increasing economic and commercial benefit opportunities for Trust Communities including non Trust Communities (ILC held Lands) the Trust is committed to increasingly develop all manner of land management activities and commercial programs to improve the viability of our most important asset, land, in partnership with Communities. Economic Development and Sustainability be it joint Farming practices Tourism ventures is the way of the future for the Trust and its Communities.

Natural Resource Management Projects

The Aboriginal Lands Trust Land Management Team has continued working with Aboriginal Communities predominately in the Northern and Yorke and South Australian Murray Darling Basin Natural Resource Management Regions but also with Communities in the South Australian Arid Lands Region. Through this period of increased competition for a smaller Government funding provision the Land Management team have provided opportunities for training and on-ground works projects in pest plant and pest animal control, cultural site protection, land reclamation work, revegetation, skills development training that includes safe chemical handling, load machine operations, nursery operations and the sharing of problems and ideas at regional workshops.

Over the past twelve months the Land Management Team has been funded by the South Australian Murray Darling NRM Board and the Northern and Yorke NRM Boards to engage Aboriginal Communities through a range of Board approved programs. One project, the Aboriginal Learning on Country project which ran in partnership with Gerard Community, ALT, the MDB NRM Board and a number of other sponsors was extremely successful. The team of 5 trainees gained their Certificate 2 in Conservation and Land Management and is now ready for any ongoing land management work and contract work which may be available with other agencies or neighboring property owners.

Coober Pedy - NAIDOC

Early in 2010 the Aboriginal Family Support Services at Coober Pedy contacted the ALT seeking assistance. It was planning to combine Reconciliation Day and NAIDOC Week into a day of celebration and tree planting activity. The day commenced with a march by the Coober Pedy school children, teachers and parents. The children were excited and chatted to each other as they marched.

The cold of the morning was felt by all as they waited for Umoona Elders to arrive. Children became restless, the cacophony of mixed conversations grew louder, intermittently softened on teacher command. An explanation of Aboriginal respect for Community Elders was provided by a school teacher. Expectantly the Umoona bus arrived and with its Elderly Community members, conversation respectfully fell silent and Reconciliation proceedings began. Elders were introduced and a short Welcome to Country was given by Eileen Crombie.



As the cold morning drew to a close on the young audience a morning tea break of scones, jam and cream with Billy tea was eagerly devoured. The children then marched down to the drive-in where the dedication of 100 trees to unsung heroes of the Aboriginal Community was made. The ALT provided the plants and assisted with irrigation planning. The Coober Pedy Council undertook the irrigation installation and pre-dug the planting holes.

Natural Resource Management Projects

South Australian Murray Darling Basin - Natural Resource Management Gerard Community

In June 2009 a partnership between Gerard Community and the Aboriginal Lands Trust enabled the Community to take advantage of an opportunity provided by the South Australian Murray Darling Basin NRM Board and other sponsors for Community members to be formally trained in Conservation and Land Management techniques to enable important land restoration initiatives and to protect the biological qualities of the Gerard Community Reserve Lands.

The program provided the opportunity for 6 trainees and a supervisor to undertake a Certificate II in Conservation and Land Management as well as other opportunities to be involved in training with Aboriginal Lands Trust staff, the Murray Darling Basin NRM Board and workplace training with MADEC.



ALOC team

This twelve month traineeship opportunity provided Community Members with the opportunity to direct their own program of land management and Caring for their Country whilst being trained in contemporary land management practices and obtaining necessary qualifications for gaining work in the wider Community. Support for the project came from the Aboriginal Lands Trust Landcare Officer Roger Rigney who has been working with the Community for the past six years to improve land condition and manage vertebrate and weed pests with the long term view of developing economically viable and sustainable industries on the land.

Natural Resource Management Projects

The team had full responsibility for the onsite care and maintenance of equipment, and they proved diligent in this process resulting in all equipment being returned to the ALT at the end of the project. The team gained a considerable amount of knowledge during their training program which assisted their productivity within the community.

Weed and pest control

Participants undertook training to gain their firearms license in order to reduce feral animals accessing the reserve and provide a second line of control after baiting. The Safe Use of Firearms training was delivered on site by TAFE. Fox baiting training and advice was provided by an Authorised Officer from the SA MDB NRM Board who conducted a Pest Management Workshop on Gerard Community for trainees.



Fox baiting



Firearms safety training 1



Firearms safety training 2

Participants were instructed in the safe use of chemicals for weed control with outbreaks of Cactus targeted along with other woody weeds including Boneseed, African Boxthorn and Olive.



Chemical weed control



Mechanical weed control

Natural Resource Management Projects

Another aspect of training was the safe use of vehicles for on and off road work environments. Instruction was provided in 4 wheel drive and all terrain vehicles on site at the Gerard quarry.



ATV training



Plant identification training



Field training

Natural Resource Management Projects

Skills developed by participants through this program will assist the Community in a variety of ways.



Seed collecting



Classroom study



Working with DEH



Water monitoring



Water monitoring



Front end loader



Redbanks revegetation



GPS training



Fencing

Natural Resource Management Projects

SA Arid Lands - Natural Resource Management

Again 2009/10 was a year which witnessed much behind the scenes activity by ALT with many visits and meetings to provide support for;

- Land management matters, review of regional natural resources management plans and assistance with Indigenous Protected Area application, consultation and management plan material research.
- Project scoping.
- Delivering project materials.
- Meeting contractors and arranging quotes for work.
- Contract negotiations with regional board.

Since 2004, the inception of State Regional Natural Resource Management Boards, the Aboriginal Lands Trust has been contracted by the South Australian Arid Lands NRM Board (SAALNRMB) to undertake Aboriginal NRM engagement. During this six year period a large number of training and on-ground works projects were completed.

With the recent employment of two Aboriginal Engagement officers at the SAALNRMB, the ALT will hand over this responsibility.

Northern and Yorke - Natural Resource Management

Davenport Project

The northern zone of the region hosted two on-ground work projects for the year. For a number of years prickly-pear cactus (*Opuntia stricta*) has widely spread throughout the Davenport sandhills, an ideal environment for this well adapted pest competitor.



The spread of cactus in the Davenport sandhills

Natural Resource Management Projects

A project was developed whereby two herbicide trials would be implemented to assess their effectiveness on the control of the cactus and demonstrate to Community the value of this type of work and how to set up future trials.



The effect of Garlon after 14 days



Applying Glyphosate to prickly-pear cactus

This field experiment had two objectives. The first was to establish whether or not the *Opuntia* species could be controlled using chemicals, the second that the Davenport Community NRM team was able to use them.



Boxthorn control Yappala Spring

Yappala Station Project

Yappala Spring is situated below the Yappala Ranges on the north eastern extent. On the southern side a neighbouring property appears to be a source of Boxthorn seed flushed down the creek during rain events.

The spring contained a number of large bushes while the creek and its environs supported widespread seedlings and small bushes in the rocky terrain. Several hundred bushes were either hand pulled or treated with herbicide.

This project work achieved its immediate objectives. Negotiations with the neighboring land holder will provide a long term solution.

Natural Resource Management Projects

Point Pearce Project

The Point Pearce Community in partnership with the Aboriginal Lands Trust were funded by the Department of Environment, Water, Heritage and the Arts to commence consultation to draft a management plan with the objective of Wardang Island being declared an Indigenous Protected Area. A number of Community consultations and visits to the island will be organised to assist Community members in developing the Draft Management Plan.

National Landcare Forum 2010

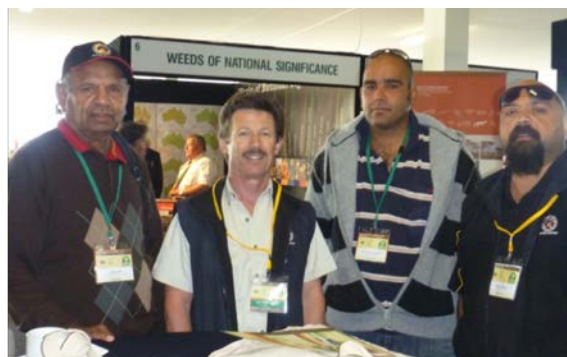
Throughout the decade of Landcare Aboriginal People have participated in Landcare programs and recognise the Landcare symbol as a partnership between their traditional land management activities and the need to be involved with remedial feral animal and weed control and scientific data collection and monitoring. In 2010 the National Landcare Forum was held in Adelaide at Morphettville Racecourse from the 23rd to the 25th March. A number of Community and Aboriginal Lands Trust Board members attended with support from the Regional NRM Boards. The Aboriginal Lands Trust Land Management team made a presentation under the Community Engagement Theme and the General Manager presented as a Keynote Speaker on the topic of Aboriginal Partnerships.



ALT Roger Rigney Presentation Landcare Forum



John Chester, Kelly Flugge and Archie Saunders



ALT Board and Staff members

Natural Resource Management Projects

The event commenced with a traditional smoking ceremony provided by Major Sumner and a welcoming to country dance performance from Ngarrindjeri group Tal-kin-jeri. The forum workshops continued for two days with the opportunity for participants to meet Indigenous delegates from around Australia and a number of other countries. A great closing ceremony was provided by the contemporary Kurruru Youth Performing Arts Dancers. The final day of the forum provided an opportunity for delegates to participate in fieldtrips.



Fieldtrip to Murrenghan



Murrenghan

The Aboriginal Lands Trust organized the Indigenous Landcare Tour which included visits to Murrenghan Community on the Lower Murray and Raukkan Community on the shores of Lake Alexandrina. This gave both Community and participants a great opportunity to talk and for Communities to present and display their achievements and on-ground works undertaken over many years to get their Country well on the road to recovery.



Presentation Raukkan



Raukkan

Financial Statements

Independent Auditors Report	39
Statement by the Board	41
Statement of Financial Position	42
Statement of Comprehensive Income	43
Statement of Cash Flows	44
Statement of Changes in Equity	45
Accounting Notes	46
Non-current Assets	59



9th Floor
State Administration Centre
200 Victoria Square
Adelaide SA 5000
DX 56208
Victoria Square
Tel +618 8226 9640
Fax +618 8226 9688
ABN 53 327 061 410
audgensa@audit.sa.gov.au
www.audit.sa.gov.au

To the Members Aboriginal Lands Trust

As required by section 31 of the *Public Finance and Audit Act 1987* and section 20 of the *Aboriginal Lands Trust Act 1966*, I have audited the accompanying financial statements of the Aboriginal Lands Trust for the financial year ended 30 June 2010. The financial statements comprise:

- A Statement of Comprehensive Income
- A Statement of Financial Position
- A Statement of Changes in Equity
- A Statement of Cash Flows
- Notes to and forming part of the accounts
- A Certificate from the Chairperson, General Manager and Finance Officer.

The responsibility of the Members for the financial statements

The Members are responsible for the preparation and the fair presentation of the financial statements in accordance with the Treasurer's Instructions promulgated under the provisions of the *Public Finance and Audit Act 1987* and Australian Accounting Standards. This responsibility includes establishing and maintaining internal controls relevant to the preparation and fair presentation of the financial statements that are free from material misstatement, whether due to fraud or error; selecting and applying appropriate accounting policies; and making accounting estimates that are reasonable in the circumstances.

Auditor's responsibility

My responsibility is to express an opinion on the financial statements based on the audit. The audit was conducted in accordance with the requirements of the *Public Finance and Audit Act 1987* and Australian Auditing Standards. The Auditing Standards require that the auditor complies with relevant ethical requirements relating to audit engagements and plans and performs the audit to obtain reasonable assurance whether the financial statements are free from material misstatement.

An audit involves performing procedures to obtain audit evidence about the amounts and disclosures in the financial statements. The procedures selected depend on the auditor's judgement, including the assessment of the risks of material misstatement of the financial statements, whether due to fraud or error. In making those risk assessments, the auditor considers internal control relevant to the entity's preparation and fair presentation of the financial statements in order to design audit procedures that are appropriate in the circumstances. An audit also includes evaluating the appropriateness of the accounting policies used and the reasonableness of accounting estimates made by the Members, as well as the overall presentation of the financial statements.

I believe that the audit evidence I have obtained is sufficient and appropriate to provide a basis for my auditor's opinion.

Basis for qualified auditor's opinion

As detailed in the financial statements, the Aboriginal Lands Trust included values for its land and building assets for the first time in the financial statements for the year ending 30 June 2007. The valuation of these assets is based upon a valuation assessment performed by the Valuer-General. This valuation has not been specifically performed for the Aboriginal Lands Trust for financial reporting purposes; therefore the valuation may not reflect fair value.

This is not in accordance with the Treasurer's Instructions, specifically Accounting Policy Statements specified in Accounting Policy Framework III 'Asset Accounting Framework'. It also does not comply with AASB 116 'Property, Plant and Equipment'.

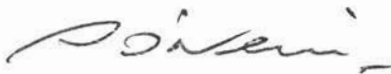
Further, the financial statements of the Aboriginal Lands Trust have not recognised the value of infrastructure assets on its land holdings in accordance with Accounting Policy Framework III and AASB 116 'Property, Plant and Equipment'.

The Aboriginal Lands Trust has made no assessment of impairment or useful lives for buildings and infrastructure assets. Therefore depreciation has not been able to be calculated or charged for buildings and infrastructure assets, in accordance with Accounting Policy Framework III and AASB 116 'Property, Plant and Equipment'.

The effect of the basis of valuation used and the exclusion of infrastructure assets and depreciation on the resulting balance of Property, Plant and Equipment reported in the financial statements cannot be ascertained.

Qualified auditor's opinion

In my opinion, except for the effects of the matters discussed in the preceding paragraphs, the financial statements present fairly, in all material respects, the financial position of the Aboriginal Lands Trust as at 30 June 2010, its financial performance and its cash flows for the year then ended in accordance with the Treasurer's Instructions promulgated under the provisions of the *Public Finance and Audit Act 1987* and Australian Accounting Standards.



S O'Neill
AUDITOR-GENERAL
7 February 2011

DRAFT SUBJECT TO AUDIT

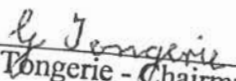
ABORIGINAL LANDS TRUST

STATEMENT BY THE BOARD FOR THE YEAR ENDED 30 JUNE 2010


We certify that the attached general purpose financial statements for the Aboriginal Lands Trust:


- complies with any relevant Treasurer's instructions issued under section 41 of the *Public Finance and Audit Act 1987*, and any relevant Australian accounting standards;
- are in accordance with the accounts and records of the Trust; and
- presents a true and fair view of the financial statements of the Aboriginal Lands Trust as at 30 June 2010 and the results of its operation and cash flows for the financial year.

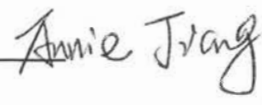
We certify that the internal controls employed by the Aboriginal Lands Trust for the financial year over its financial reporting and its preparation of the general purpose financial statements have been effective throughout the reporting period.


George Tongerie - Chairman AM JP 16612

George Tongerie
Chairperson AM, JP16612


John Chester
General Manager


Wayne Garrett
Finance Officer

 Annie Jiang

Signed at 1 Wright Rd, Walkley Heights SA 5098 this 22nd day of December 2010

ABORIGINAL LANDS TRUST

STATEMENT OF FINANCIAL POSITION

As at 30 June 2010

	Note No.	2010 \$	2009 \$
Current assets			
Cash and cash equivalents	9	1,615,582	1,428,267
Receivables	10	277,293	214,881
Total current assets		1,892,875	1,643,148
Non-current assets			
Property, plant and equipment	11	60,337,068	60,302,694
Total non-current assets		60,337,068	60,302,694
Total assets		62,229,943	61,945,842
Current liabilities			
Payables	12	433,499	143,513
Staff benefits	13	52,410	32,008
Total current liabilities		485,909	175,521
Non-current liabilities			
Staff benefits	13	12,468	656
Total non-current liabilities		12,468	656
Total liabilities		498,377	176,177
Net Assets		61,731,566	61,769,665
Equity			
Retained earnings		61,423,930	61,386,073
Unspent project funds surplus		307,636	383,592
Total Equity		61,731,566	61,769,665

The total equity is attributable to the SA Government as owner

Unrecognised contractual commitments

14

Contingent assets and liabilities

15

The above statement should be read in conjunction with the accompanying notes.

ABORIGINAL LANDS TRUST

STATEMENT OF COMPREHENSIVE INCOME

For the year ended 30 June 2010

	Note No.	2010 \$	2009 \$
Expenses			
Staff expenses	3	727,799	484,414
Board Expenses	4	128,633	187,794
Contractors fees		412,300	314,966
Consultants fees	18	56,167	15,364
Depreciation expense	11	38,312	31,836
Legal & other professional fees		18,073	21,443
Materials, equipment and maintenance costs		93,912	102,072
Telephone, printing and stationery		31,328	35,146
Travel and accommodation		49,856	48,460
Vehicle expenses		100,187	91,668
Bad and doubtful debts		8,218	85,202
Other expenses	5	102,017	82,280
Total expenses		1,766,802	1,500,645
Income			
Operating grant from SA Government		590,230	549,159
Project grants	7	693,807	392,262
Interest revenues		49,525	32,814
Fees and charges		166,687	331,756
Other revenue	8	228,454	742,802
Total income		1,728,703	2,048,793
Net result		(38,099)	548,148
Total comprehensive result		(38,099)	548,148

The net result and total comprehensive result are attributable to the SA Government as owner

The above statement should be read in conjunction with the accompanying notes.

ABORIGINAL LANDS TRUST

STATEMENT OF CASH FLOWS

For the year ended 30 June 2010

	Note No.	2010 \$	2009 \$
Cash flows from operating activities			
Cash outflows			
Staff and board payments		824,218	654,140
Payments for supplies & services		611,682	878,202
GST payments on purchases		56,021	123,049
GST paid to ATO		54,453	45,910
Cash used in operation		1,546,374	1,701,301
Cash inflows			
Fees and charges			
Receipts from Grants		1,213,406	1,047,132
Interest Received		49,525	32,814
GST receipts on sale		151,621	181,214
Other receipts		395,143	1,074,558
Cash generated from operation		1,809,695	2,335,718
Net cash provided by operating activities	17	263,321	634,417
Cash flows from investing activities			
Cash outflows			
Purchase of property, plant and equipment		(76,006)	(66,999)
Net Cash (used in) investing activities		(76,006)	(66,999)
NET INCREASE IN CASH HELD		187,315	567,418
Cash and cash equivalents at the beginning of the period		1,428,267	860,849
Cash and cash equivalents at the end of the period	17	1,615,582	1,428,267

The above statement should be read in conjunction with the accompanying notes.

STATEMENT OF CHANGES IN EQUITY

For the year ended 30 June 2010

	Unspent Project Funds Surplus	Retained earnings	Total Equity
	\$	\$	\$
Balance at 30 June 2008	489,060	60,732,457	61,221,517
Net result for 2008-09	0	548,148	548,148
Total comprehensive result for 2008-09	0	548,148	548,148
Transfers to retained earning	(105,468)	105,468	0
Balance at 30 June 2009	383,592	61,386,073	61,769,665
Net result for 2009-10	0	(38,099)	(38,099)
Total comprehensive result for 2009-10	0	(38,099)	(38,099)
Transfers to retained earning	(75,956)	75,956	0
Balance at 30 June 2010	307,636	61,423,930	61,731,566

All changes in equity are attributable to the SA Government as owner

The above statement should be read in conjunction with the accompanying notes.

ABORIGINAL LANDS TRUST

NOTES TO AND FORMING PART OF THE ACCOUNTS FOR THE YEAR ENDED 30 JUNE 2010

NOTE INDEX

Objectives of the Aboriginal Lands Trust	Note 1
Summary of significant accounting policies	Note 2
Staff expenses	Note 3
Board expenses	Note 4
Other expenses	Note 5
Auditor's remuneration	Note 6
Project income and expenses	Note 7
Other revenue	Note 8
Cash and cash equivalents	Note 9
Receivables	Note 10
Property, plant and equipment	Note 11
Payables	Note 12
Staff benefits	Note 13
Unrecognised contractual commitments	Note 14
Contingent assets and contingent liabilities	Note 15
Remuneration of board and committee members	Note 16
Cash flow reconciliation	Note 17
Consultancies	Note 18
Financial Instruments	Note 19
Administered Items	Note 20

Note 1 Objectives of the Aboriginal Lands Trust

The Aboriginal Lands Trust (the Trust) is constituted under the Aboriginal Lands Trust Act, 1966 (Act). In accordance with this Act, the Trust may

- (a) with the consent of the Minister, sell, lease, mortgage or otherwise deal with land vested in it pursuant to this Act; or
- (b) develop such land subject to compliance with the provisions of any Act or law relating thereto, as it thinks fit.

The Act also provides for the establishment of the Aboriginal Lands Business Advisory Panel to advise and assist Aboriginal communities and Aboriginal persons in the establishment and management of business or community enterprises. The Trust consists of a Chairman, members who represent Aboriginal Councils and a Minister's representative.

Revenue from SA Government

The activities of the Trust are primarily funded from an operating grant from the South Australian Government through the Aboriginal Affairs and Reconciliation Division of the Department of Premier and Cabinet and various project grants from the South Australian and Commonwealth governments.

Note 2 Summary of significant accounting policies

a) Statement of compliance

The financial statements are general purpose financial statements. The accounts have been prepared in accordance with relevant Australian Accounting Standards and Treasurer's Instructions and Accounting Policy Statements promulgated under the provision of the Public Finance and Audit Act 1987.

Except for AASB 2009-12, which the Trust has early adopted Australian Accounting Standards and interpretations that have recently been issued or amended but are not yet effective have not been adopted by the Trust for the reporting period ending 30 June 2010.

ABORIGINAL LANDS TRUST

NOTES TO AND FORMING PART OF THE ACCOUNTS FOR THE YEAR ENDED 30 JUNE 2010

b) Basis of preparation

The preparation of the financial statements requires:

- the use of certain accounting estimates and requires management to exercise its judgement in the process of applying the Trust's accounting policies. The areas involving a higher degree of judgement or where assumptions and estimates are significant to the financial statements, these are outlined in the applicable notes;
- accounting policies are selected and applied in a manner which ensures that the resulting financial information satisfies the concepts of relevance and reliability, thereby ensuring that the substance of the underlying transactions or other events are reported; and
- compliance with Accounting Policy Statements issued pursuant to section 41 of the Public Finance and Audit Act 1987. In the interest of public accountability and transparency the Accounting Policy Statements require the following note disclosures, which have been included in this financial statement:
 - a) expenses incurred as a result of engaging consultants (as reported in the Statement of Comprehensive Income); and
 - b) board/committee member and remuneration information, where a board/committee member is entitled to receive income from membership other than a direct out-of-pocket reimbursement.

The Trust's Statement of Comprehensive Income, Statement of Financial Position, and Statement of Changes in Equity have been prepared on an accrual basis and are in accordance with historical cost convention, except for certain assets that were valued in accordance with the valuation policy applicable.

The Statement of Cash Flows has been prepared on a cash basis.
The financial statements have been prepared based on a twelve month period and presented in Australian currency.

The accounting policies set out below have been applied in preparing the financial statements for the year ended 30 June 2010 and the comparative information presented.

c) Reporting entity

The Trust is constituted under the Aboriginal Lands Trust Act, 1966 .
The financial statements and accompanying notes include all the controlled activities of the Trust.

e) Comparative information

The presentation and classification of items in the financial statements are consistent with prior periods except where specific accounting standards and/or Accounting Policy Statements has required a change.
Comparative figures have been adjusted to conform to changes in presentation in these financial statements where required eg preparation of a single Statement of Comprehensive Income.

f) Rounding

All amounts in the financial statements and accompanying notes have been rounded to the nearest dollar.

g) Taxation

The Trust is not subject to income tax. The Trust is liable for goods and services tax (GST) and emergency services levy.
Income, expenses and assets are recognised net of the amount of GST except:

- when the GST incurred on a purchase of goods or services is not recoverable from the Australian Taxation Office, in which case the GST is

ABORIGINAL LANDS TRUST

NOTES TO AND FORMING PART OF THE ACCOUNTS FOR THE YEAR ENDED 30 JUNE 2010

recognised as part of the cost of acquisition of the asset or as part of the expense item applicable; and

- receivables and payables, which are stated with the amount of GST included.

The net amount of GST recoverable from, or payable to, the Australian Taxation Office is included as part of receivables or payables in the Statement of Financial Position.

Cash flows are included in the Statement of Cash Flows on a gross basis and the GST component of cash flows arising from investing and financing activities, which is recoverable from, or payable to, the Australian Taxation Office is classified as part of operating cash flows.

Unrecognised contractual commitments and contingencies are disclosed net of the amount of GST recoverable from, or payable to the Australian Taxation Office. If GST is not payable to, or recoverable from the Australian Taxation Office, the commitments and contingencies are disclosed on a gross basis.

h) Events after the end of the reporting period

There has been no events occurring after balance date and before the date the financial statements are that required disclosure in the financial statements.

i) Income

Income is recognised to the extent that it is probable that the flow of economic benefits to the trust will occur and can be reliably measured.

Income has been aggregated according to its nature and has not been offset unless required or permitted by a specific accounting standard, or where offsetting reflects the substance of the transaction or other event.

The following are specific recognition criteria:

Fees and charges

Revenues from fees and charges relate to income received from activities of the Point Pearce Farm and Head of Bight Whale Watch Centre. This revenue is recognised upon delivery of the service to the clients or by reference to the stage of completion.

Project grants received

Project grants are recognised as an asset and income when the Trust obtains control of the grant or obtains the right to receive the grants and the income recognition criteria are met (i.e. the amount can be reliably measured and the flow of resources is probable).

Generally, the Trust has obtained control or the right to receive for:

- Grants with unconditional stipulations - this will be when the agreement becomes enforceable i.e. the earlier of when the receiving entity has formally been advised that the grant (eg grant application) has been approved; agreement/contract is executed; and/or the grant is received.
- Grants with conditional stipulations - this will be when the enforceable stipulations specified in the agreement occur or are satisfied; that is income would be recognised for grants received or receivable under the agreement.

Operating grant from SA Government

Operating grant for program funding are recognised as revenues when the Trust obtains control over the funding. Control over the operating grant is normally obtained upon receipt.

ABORIGINAL LANDS TRUST

NOTES TO AND FORMING PART OF THE ACCOUNTS FOR THE YEAR ENDED 30 JUNE 2010

Net gain on non-current assets

Income from the disposal of non-current assets is recognised when the control of the asset has passed to the buyer and determined by comparing proceeds with carrying amount.

Other revenue

Other revenue consists of insurance payouts, rent and other sundry income.

j) Expenses

Expenses are recognised to the extent that it is probable that the flow of economic benefits from the trust will occur and can be reliably measured. Expenses have been aggregated according to their nature and have not been offset unless required or permitted by a specific accounting standard, or where offsetting reflects the substance of the transaction or other event. The following are specific recognition criteria:

Staff expenses

Staff expenses includes all cost including wages and salaries, non-monetary benefits and leave entitlements. These are recognised when incurred.

Superannuation

The amount charged to the Statement of Comprehensive Income represents the contributions made by the Trust to the superannuation plan in respect of current services of current Trust staff.

Depreciation

All non-current assets, with the exception of land and buildings, are systematically depreciated over their useful lives in a manner that reflects the consumption of their service potential.

Assets' residual values, useful lives and depreciation methods are reviewed and adjusted if appropriate, on an annual basis.

Changes in the expected useful life or the expected pattern of consumption of future economic benefits embodied in the asset are accounted for prospectively by changing the time period or method, as appropriate, which is a change in accounting estimate.

Land is not depreciated as it has a infinite life and building have not been depreciated as their useful life and impairment have not been assessed.

Depreciation for plant and equipment is calculated on a reducing balance basis over the estimated useful life. The estimated useful life for plant and equipment is between 3 and 15 years.

k) Current and non-current classification

Assets and liabilities are characterised as either current or non-current in nature.

Assets and liabilities that are sold, consumed or realised as part of the normal operating cycle have been classified as current assets or current liabilities.

All other assets and liabilities are classified as non-current.

l) Assets

Assets have been classified according to their nature and have not been offset unless required or permitted by a specific accounting standard, or where offsetting reflects the substance of the transaction or other event.

ABORIGINAL LANDS TRUST

NOTES TO AND FORMING PART OF THE ACCOUNTS FOR THE YEAR ENDED 30 JUNE 2010

Cash and cash equivalents

Cash and cash equivalents in the Statement of Financial Position includes cash at bank and on hand and in other short-term, highly liquid investments with maturities of three months or less that are readily converted to cash and which are subject to insignificant risk of changes in value.

For the purposes of the Statement of Cash Flows, cash and cash equivalents consist of cash and cash equivalents as defined above.

Cash is measured at nominal value.

Receivables

Receivables include amounts receivable from goods and services, loans, prepayments and other accruals.

Receivables arise in the normal course of selling goods and services to other government agencies and to the public. Receivables are generally settled within 30 days after the issue of an invoice or the goods/services have been provided under a contractual arrangement.

Collectability of receivables is reviewed on an ongoing basis. An allowance for doubtful debts is raised when there is objective evidence that the trust will not be able to collect the debt. Bad debts are written off when identified.

Non-current assets - Acquisition and recognition

Land and buildings were brought to account for the first time as at 30 June 2007 using the Valuer-Generals valuation. The valuation was not performed for financial statement purposes and is valued on an individual basis rather than a composite asset. Land and buildings will be revalued every four years using the Valuer-Generals valuation until a specific valuation can be performed by the Trust. Infrastructure has not been included in the financial statements as it has not been valued.

Plant and Equipment are initially recorded at cost or at the value of any liabilities assumed, plus any incidental cost involved with the acquisition. Plant and equipment are subsequently measured at fair value less accumulated depreciation.

Where assets are acquired at no value, or minimal value, they are recorded at fair value in the Statement of Financial Position.

All non-current assets with a value equal to or in excess of \$500 are capitalised.

Impairment

All plant and equipment are tested for indication of impairment at each reporting date.

Where there is an indication of impairment, the recoverable amount is estimated.

An amount by which the asset's carrying amount exceeds the recoverable amount is recorded as an impairment loss.

Land buildings and infrastructure have not been assessed for impairment.

m) Liabilities

Liabilities have been classified according to their nature and have not been offset unless required or permitted by a specific accounting standard, or where offsetting reflects the substance of the transaction or other event.

Payables

Payables include creditors, accrued expenses, GST payable and staff on-costs. Creditors represent the amounts owing for goods and services received prior to the end of the reporting period that are unpaid at the end of the reporting period. Creditors include all unpaid invoices received relating to the normal operations of the Trust.

ABORIGINAL LANDS TRUST

NOTES TO AND FORMING PART OF THE ACCOUNTS FOR THE YEAR ENDED 30 JUNE 2010

Accrued expenses represent goods and services provided by other parties during the period that are unpaid at the end of the reporting period and where an invoice has not been received.

All payables are measured at their nominal amount, are unsecured and are normally settled within 30 days from the date of the invoice or date the invoice is first received.

Staff on-costs include, WorkCover and superannuation contributions in respect to outstanding liabilities for salaries and wages, long service leave and annual leave.

The Trust makes contributions to State Government and externally managed superannuation schemes. These contributions are treated as an expense when they occur. There is no liability for payments to beneficiaries as they have been assumed by the respective superannuation schemes. The only liability outstanding at reporting date relates to any contributions due but not yet paid to the South Australian Superannuation Board.

Staff benefits

These benefits accrue for staff as a result of services provided up to the reporting date that remain unpaid. Long term staff benefits are measured at present value and short term staff benefits are measured at nominal amounts.

Wages, salaries, annual leave and sick leave

The liability for salary and wages are measured as the amount unpaid at the reporting date at remuneration rates current at reporting date.

The annual leave liability is expected to be payable within twelve months and is measured at the undiscounted amount expected to be paid.

No provision has been made for sick leave as all sick leave is non-vesting and the average sick leave taken in future years by staff is estimated to be less than the annual entitlement for sick leave.

Long service leave

The liability for long service leave is recognised after a staff member has completed 6.5 years (5.5 years in 2008-2009) of service. An actuarial assessment of long service leave undertaken by the Department of Treasury and Finance based on a significant sample of employees throughout the South Australian public sector determined that the liability measured using the short hand method was not materially different from the liability measured using the present value of expected future payments. This calculation is consistent with the Trust's experience of staff retention and leave taken.

n) Leases

The determination of whether an arrangement is or contains a lease is based on the substance of the arrangement. The Trust has only entered into operating leases.

Operating leases

Operating lease payments are recognised as an expense in the Statement of Comprehensive Income on a straight-line basis over the lease term. The straight-line basis is representative of the pattern of benefits derived from the leased assets.

ABORIGINAL LANDS TRUST

NOTES TO AND FORMING PART OF THE ACCOUNTS FOR THE YEAR ENDED 30 JUNE 2010

o) Unrecognised contractual commitments and contingent assets and liabilities

Commitments include operating, capital and outsourcing arrangements arising from contractual or statutory sources and are disclosed at their nominal value. Contingent assets and contingent liabilities are not recognised in the Statement of Financial Position, but are disclosed by way of a note and, if quantifiable, are measured at nominal value.

p) Administered Items

In 2009-10 the Trust did not perform any accounting functions on behalf of other entities, which could be considered administered items.

q) Unspent Project Funds Reserve

The reserve is for specific project funds which have not been spent.

Note 3 Staff expenses

	2010 \$	2009 \$
Salaries and wages	600,737	427,805
Annual leave	56,117	17,424
Long service leave	11,812	1,869
Workcover	550	972
Superannuation	58,583	36,344
Total staff costs	727,799	484,414

Note 4 Board expenses

	2010 \$	2009 \$
Board fees	66,532	75,803
Workcover	57	70
Accommodation and meals	26,564	46,723
Travel Reimbursement	35,370	65,198
Allowances Other	110	0
Total board expenses	128,633	187,794

ABORIGINAL LANDS TRUST

NOTES TO AND FORMING PART OF THE ACCOUNTS FOR THE YEAR ENDED 30 JUNE 2010

Note 5 Other expenses

	2010	2009
	\$	\$
Advertising and publicity	10,750	9,586
Bank fees and charges	998	514
Cleaning	11,712	12,056
Computer operating expenses	5,045	7,859
Conferences	2,233	0
Electricity	4,646	0
Support & donations	1,557	1,500
Grain processing fees	2	7,546
Insurance	12,140	11,034
OH&S expenses	2,281	0
Protective clothing	3,860	2,852
Rent and occupancy costs	32,654	17,525
Staff amenities	1,793	3,173
Staff Training	4,275	2,032
Subscriptions	353	436
Sundry expenses	6,535	2,968
Taxis	1,069	2,231
Workshops	114	968
Total other expenses	102,017	82,280

Note 6 Auditor's remuneration

Pursuant to section 20 of the Aboriginal Lands Trust Act, 1966, The Auditor-General has, without fee, Audited the accounts of the Trust. The Auditor-General has provided no other services.

Note 7 Project income and expenditure

	2010	2009
		\$
Government grants and contributions income		
Indigenous land management facilitator cont	7,963	27,415
NRM investment strategy	469,400	286,325
National heritage trust	68,268	60,000
Dept Employment Education & Workplace R	22,679	0
Job Network providers	45,307	0
Work SA Career Start	20,000	0
DEEST-Aboriginal Employment	14,590	0
Dept Water Land & Biodiversity	45,600	0
Other	0	18,522
Total project income	693,807	392,262

ABORIGINAL LANDS TRUST

NOTES TO AND FORMING PART OF THE ACCOUNTS FOR THE YEAR ENDED 30 JUNE 2010

Project expenditure

Facilitation and coordination	290,577	256,522
Indigenous land management facilitator 06-0	0	27,311
NRM investment strategy	419,049	142,315
Envirofunds	17,792	69,805
National Heritage Trust	42,816	0
Berri Bridge	0	1,750
Others	0	27
Total project expenditure	770,234	497,730

Note 8 Other revenue

	2010 \$	2009 \$
Insurance recovery	204,250	708,717
Rent received	0	10,545
Recovery of ALT Property Maintenance	18,796	0
Sundry Income	5,408	2,364
Rates refund Sussex Street	0	21,176
Total other revenue	228,454	742,802

Note 9 Cash & Cash Equivalents

	2010 \$	2009 \$
Cash at Bank Westpac	280,381	909,002
Cash at Bank SA	1,489	19,065
Short-term deposits with Westpac	1,333,512	500,000
Imprest account/cash on hand	200	200
Total cash and cash equivalents	1,615,582	1,428,267

Note 10 Receivables

	2010 \$	2009 \$
Current		
Receivables	305,049	99,026
Less allowance for doubtful debts	(28,716)	(20,498)
	276,333	78,528
Other debtors	960	6,097
Gerard Community Council	0	130,256
Total current receivables	277,293	214,881

Movement in the allowance for doubtful debts

The allowance for doubtful debts (allowance for impairment loss) is recognised when there is an allowance for impairment loss has been recognised in the Statement of Comprehensive

Movement in the allowance for doubtful debts (impairment loss)

	2010 \$	2009 \$
Carrying amount at the beginning of the p	20,498	145
Increase in allowance	8,218	20,353
Carrying amount at the end of the period	28,716	20,498

ABORIGINAL LANDS TRUST

NOTES TO AND FORMING PART OF THE ACCOUNTS FOR THE YEAR ENDED 30 JUNE 2010

Note 11 Property, plant and equipment

	2010 \$	2009 \$
Land and buildings		
Land at fair value	26,972,750	26,972,750
Buildings at fair value	33,206,550	33,206,550
Total land and buildings	60,179,300	60,179,300
Plant and equipment		
Plant and equipment at cost (deemed fair val	388,856	312,851
Accumulated depreciation at the end of the p	(231,088)	(189,457)
Total plant and equipment	157,768	123,394
Total property, plant and equipment	60,337,068	60,302,694

Impairment

There were no indications of impairment of plant and equipment at 30 June 2010

Note 12 Payables

	2010 \$	2009 \$
Current		
Creditors	367,242	115,792
Accrued Expenses	17,534	22,330
Staff on-cost	4,752	2,557
GST payable	43,971	2,834
Total current payables	433,499	143,513

Note 13 Staff benefits

	2010 \$	2009 \$
Current		
Annual Leave	52,410	32,008
Total current staff benefits	52,410	32,008
Long service leave	12,468	656
Total non-current staff benefits	12,468	656
Total staff benefits	64,878	32,664
Staff on-cost	4,752	2,556
Total staff benefits and oncosts	69,630	35,220

Note 14 Unrecognised contractual commitments

	2010 \$	2009 \$
Operating lease commitments		
Commitments in relation to operating leases contracted for at the reporting date but not recognised as liabilities are payable as follows:		
Within one year	0	4,403
Total operating lease commitments	0	4,403

ABORIGINAL LANDS TRUST

NOTES TO AND FORMING PART OF THE ACCOUNTS FOR THE YEAR ENDED 30 JUNE 2010

Note 15 Contingent assets and liabilities

The Trust is not aware of any contingent assets.

The Trust is involved in a dispute with T & A Holdings Trust which has leased the Goreta Point Pearce Farm. The Trust has terminated the lease and T & A Holdings Trust are disputing the termination. The Trust is acting on the advice of the Crown Solicitor, but is unable to estimate the dollar effect of any action arising from the termination.

Note 16 Remuneration of board and committee members

Members of the Aboriginal Land Trust Board and Executive Committee that were entitled to remuneration for membership during the 2010 financial year were:

Board Members

Mr George Tongerie AM, JP (Chairperson) (also on Executive Committee)
Mr Haydn Davey (Deputy Chairperson) (also on Executive Committee)
Ms Elaine Newchurch (also on Executive Committee)
Ms Mabel Lochowiak (also on Executive Committee)
Ms Irene McKenzie
Ms Christine Lennon
Mr Peter Rigney (also on Executive Committee)
Mr Brett Miller
Mr Keith Peters
Mr Reginald Dodd
Mr Ian Johnson
Mr Kingsley Abdulla

Deputy Members

Mr Bernard Porta

The number of members whose remuneration received or receivable falls within the following bands	2010	2009
\$0 - \$ 9 999	11	13
\$10 000 - \$19 999	2	1
Total number of members	13	14

The total amount of remuneration received or receivable by members was \$66,532 (\$75,803).

Note 17 Cash flow reconciliation

Reconciliation of cash and cash equivalents at the end of the reporting	2010 \$	2009 \$
Cash and cash equivalents disclosed in the Statement of Financial Position	1,615,582	1,428,267
Reconciliation of net result to net cash provided by/(used in) operating activities:		
Net result	(38,099)	548,148
<u>Non cash-flows in profit from net result</u>		
Depreciation	38,312	31,836
Asset Write Off	3,320	0
<u>Change in assets and liabilities</u>		
(Increase)/Decrease in receivables	(62,413)	126,064
Increase/(Decrease) in payables	289,986	(88,291)
Increase in provisions	32,215	16,660
Net cash provided by operating activities	263,321	634,417

ABORIGINAL LANDS TRUST

NOTES TO AND FORMING PART OF THE ACCOUNTS FOR THE YEAR ENDED 30 JUNE 2010

Note 18 Consultancies

	2010	2009
	\$	\$
	56,167	15,364
	No.	No.
The number of consultancies that fell within the following bands:		
Less than \$ 10,000	2	3
Between \$ 10,000 and \$ 50,000	1	-
Total	3	3

Note 19 - Financial Instruments

Details of the significant accounting policies and methods adopted are disclosed in Note 2 Summary of Significant Accounting Policies.

Category of financial assets	Carrying amount/ Fair Value 2010 \$	Carrying amount/ Fair Value 2009 \$
Financial assets		
Cash and cash equivalents	1,615,582	1,428,267
Receivables *	306,009	235,379
Financial liabilities		
Payables *	384,776	138,222

* Amount of receivables and payables disclosed here excludes statutory receivables and payables (Staff on-cost and GST payable and recoverable). All amounts recorded are at cost.

ABORIGINAL LANDS TRUST

NOTES TO AND FORMING PART OF THE ACCOUNTS FOR THE YEAR ENDED 30 JUNE 2010

Credit risk

Credit risk arises when there is the possibility of the Trust's debtors defaulting on their contractual obligations resulting in financial loss to the Trust. The Trust measures credit risk on a fair value basis and monitors risk on a regular basis.

		Past due by		
		Overdue < 30 days	Overdue 30-60 days	Overdue > 60 days
				Total
2010	2010	\$	\$	\$
Receivables	253,472	15,293	36,284	305,049
Impaired receivables	-	-	28,716	28,716
2009	2009			
Receivables	17,786	609	216,984	235,379
Impaired receivables	-	-	20,498	20,498

Maturity Analysis

All financial assets and liabilities have a maturity less than one year.

Liquidity risk

The Trust is funded by an operating grant from the SA Government. The Trust works with the Department of Treasury and Finance to determine the cash flows associated with its Government approved program of work and to ensure funding is provided through SA Government budgetary processes to meet the expected cash flows. The Trust settles undisputed accounts within 30 days from the date of the invoice or date the invoice is first received. In the event of a dispute, payment is made 30 days from resolution.

The Trust exposure to liquidity risk is insignificant based on past experience and current assessment of risk.

Market risk

Market risk for the Trust is primarily through interest rate risk. There is no exposure to foreign currency or other price risks.

Sensitivity disclosure analysis

A sensitivity analysis has not been undertaken for the interest rate risk of the Trust as it has been determined that the possible impact on the Statement of Comprehensive Income or total equity from fluctuations in interest rates is immaterial.

Note 20 - Administered Items

	2010	2009
	\$	\$
Administered Revenues		
Lease revenues	-	14,393
Total Administered Revenues	-	14,393
Administered Expenses		
Bad Debt - Apache Loan	-	14,393
Total Administered Expenses	-	14,393
Net Result	-	-

ABORIGINAL LANDS TRUST

Note 11 Reconciliation of non-current assets

The following table shows the movement of non-current assets during 2009-10

	Land	Buildings	Plant and equipment	Non-current assets total
	\$	\$	\$	\$
Carrying amount at the beginning of the period	26,972,750	33,206,550	123,394	60,302,694
Additions	0	0	76,006	76,006
Disposals eg sales, write off	0	0	(3,320)	(3,320)
Depreciation	0	0	(38,312)	(38,312)
Carrying amount at the end of the period	26,972,750	33,206,550	157,768	60,337,068

The following table shows the movement of non-current assets during 2008-09

	Land	Buildings	Plant and equipment	Non-current assets total
	\$	\$	\$	\$
Carrying amount at the beginning of the period	26,972,750	33,206,550	88,231	60,267,531
Additions	0	0	66,999	66,999
Depreciation	0	0	(31,836)	(31,836)
Carrying amount at the end of the period	26,972,750	33,206,550	123,394	60,302,694



ABORIGINAL LANDS TRUST

Telephone: (08) 8169 1500 Facsimile: (08) 8359 6402
P.O. Box 21 Ingle Farm S.A. 5098 1 Wright Road Walkley Heights S.A. 5098